

# OIL PUMP OUTPUT PRESSURE SENSOR

## 油泵输出油压压力传感器

AE-F-B010G-10-02-B2

【AE 系列--汽车发动机系列 Automobile Engine Series】

### 产品功能 | PRODUCT FEATURES

减少动力消耗（油泵系统）；控制超限压力；保证燃油充分供给。

发动机高压/高容量（峰值可达220l/h）需求的快速反应。

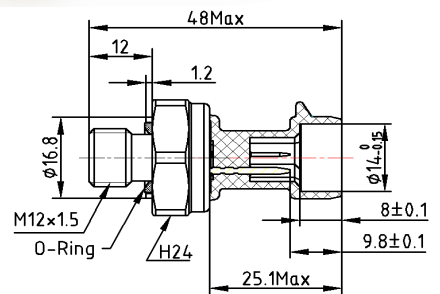
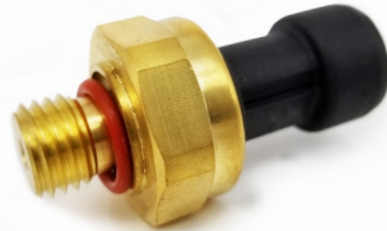
增加泵的使用寿命(可延长50%-100%)。

To reduce power consumption (pump system).Control the excessive pressure.Ensure sufficient fuel oil supply.rapid response to the engine high pressure/high capacity (up to peak value is up to 220 l/h) demand .

To increase the service life of the pump (can prolong 50% - 100%).

产品可靠性好、使用寿命长，适宜在汽车系统的恶劣环境下工作。

Product has good reliability, long service life and suitable to work under the bad environment in the car system.



### 工作参数 | WORKING PARAMETERS

- ◇ 工作压力：0~1.0MPa（范围可调整）
- ◇ 精度：±1.0%F.S.(线性,迟滞性,重复性)
- ◇ 全误差带：±2.5%F.S.(-40°C~+130°C)  
另有高精度版本可选
- ◇ 运行温度：-40°C~+130°C
- ◇ 存储温度：-40°C~+150°C
- ◇ 保护压力：1.5Mpa
- ◇ 爆破压力：2.0Mpa
- ◇ 工作介质：柴油、汽油
- ◇ 使用寿命：三百万次全量程循环
- ◇ 振动：13g(100~400Hz)
- ◇ 电气接口：Packard #12065287
- ◇ 防护等级：IP65
- ◇ 壳体材质：C3602黄铜
- ◇ 压力连接：M12×1.5
- ◇ 供电电压：5.0±0.25VDC
- ◇ 输出电压：0.5~4.5VDC(5V范围内可调整)
- ◇ 供电电流：10mA(最大)
- ◇ 负载阻抗：10KΩ(典型)
- ◇ 输出响应时间：3mS
- ◇ 过压保护：40VDC
- ◇ 反向电压：-40VDC
- ◇ 短路保护：有
- ◇ EMC(1MHz—400MHz):100V/m
- ◇ ESD:15KV

- ◇ Operating pressure range: 0~0.54Mpa(range is adjustable)
- ◇ Accuracy: ±1.0%F.S.(Linearity,Hysteresis,Repeatability)
- ◇ Total error band: ±2.5%F.S.(-40°C~+130°C)  
other high-precision versions are available
- ◇ Operating temperature: -40°C~+130°C
- ◇ Storage temperature: -40°C~+150°C
- ◇ Protect pressure: 1.5Mpa
- ◇ Burst pressure: 2.0Mpa
- ◇ Operating medium:oil°Cgasoline
- ◇ Life cycle: 3 million cycles
- ◇ Vibrating:13g(100~400Hz)
- ◇ Electrical connectors:Packard #12065287
- ◇ Ingress Protection:IP65
- ◇ Shell material:C3602 Brass
- ◇ Pressure connection:M12×1.5
- ◇ Supply voltage:5.0±0.25VDC
- ◇ Output voltage: 0.5~4.5VDC (Can be adjusted within 5VDC)
- ◇ Supply current: 10mA (Maximum)
- ◇ Loat impedance: 10KΩ(Typical)
- ◇ Output response time:3mS
- ◇ Overvoltage protection: 40VDC
- ◇ Reverse voltage protection: -40VDC
- ◇ short-circuit protection: Yes
- ◇ EMC withstand(1MHz—400MHz):100V/m
- ◇ ESD withstand:15KV