

HYDRAULIC PRESSURE SENSOR FOR AUTOMOBILE TRANSMISSION

汽车变速箱油压传感器

AT-L-B074A-13-XX-S4

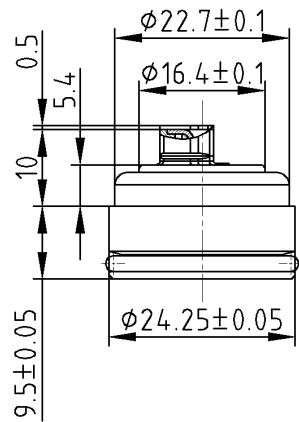
【AT系列--汽车变速箱系列 Automobile Transmission Series】

产品特点 | PRODUCT FEATURES

汽车变速箱油压压力传感器用于测量变速箱油压压力。
The hydraulic pressure sensor of the automobile transmission can measure the oil pressure of the transmission.

测量精度高，使得变速箱控制器能够对优雅精确测量；
产品可靠性好，使用寿命长，适宜在汽车系统恶劣环境下工作；陶瓷电容结构，对测量介质兼容性好。

Product has a high measuring accuracy, enables the transmission controller to accurate measurement of oil pressure;
Good reliability and long service life and suitable to work under the bad environment in the car system;
Ceramic capacitor structure, good compatibility of measured Medium.



工作参数 | WORKING PARAMETERS

- ◇ 工作压力：1~74 BraA (范围可调整)
- ◇ 精度：±1.5%F.S. (线性，迟滞性，重复性)
- ◇ 全误差带：±3.0%F.S. (-40°C~+140°C)
另有高精度版本可选
- ◇ 运行温度：-40°C~+140°C
- ◇ 存储温度：-40°C~+150°C
- ◇ 保护压力：10Mpa
- ◇ 爆破压力：20Mpa
- ◇ 工作介质：润滑油
- ◇ 使用寿命：三百万次全量程循环
- ◇ 振动：10g (50~2000Hz)
- ◇ 防护等级：IP68
- ◇ 壳体材质：SWRCH22A-DA
- ◇ 压力连接：φ24.25径向密封
- ◇ 供电电压：5.0±0.25VDC
- ◇ 输出电压：0.5~4.75VDC (5V范围内可调整)
- ◇ 供电电流：10mA(最大)
- ◇ 负载阻抗：10KΩ (典型)
- ◇ 输出响应时间：3mS
- ◇ 过压保护：16VDC
- ◇ 反向电压：-14VDC
- ◇ 短路保护：有
- ◇ EMC (512MHz—1GHz)：50V/m
- ◇ EMC (1MHz—512MHz)：100V/m
- ◇ ESD：15KV
- ◇ Operating pressure range: 1~74 BraA (range is adjustable)
- ◇ Accuracy: ±1.5%F.S. (Linearity, Hysteresis, Repeatability)
- ◇ Total error band: ±3.0%F.S. (-40°C~+140°C)
other high-precision versions are available
- ◇ Operating temperature: -40°C~+140°C
- ◇ Storage temperature: -40°C~+150°C
- ◇ Protect pressure: 10Mpa
- ◇ Burst pressure: 20Mpa
- ◇ Operating medium: Lubricating oil
- ◇ Life cycle: 3 million cycles
- ◇ Vibrating: 10g (50~2000Hz)
- ◇ Ingress Protection: IP68
- ◇ Shell material: SWRCH22A-DA
- ◇ Pressure connection: φ24.25 Radial Seal
- ◇ Supply voltage: 5.0±0.25VDC
- ◇ Output voltage: 0.5~4.75VDC (Can be adjusted within 5VDC)
- ◇ Supply current: 10mA (Maximum)
- ◇ Load impedance: 10KΩ (Typical)
- ◇ Output response time: 3mS
- ◇ Overvoltage protection: 16VDC
- ◇ Reverse voltage protection: -14VDC
- ◇ short-circuit protection: Yes
- ◇ EMC withstand (512MHz—1GHz): 50V/m
- ◇ EMC withstand (1MHz—512MHz): 100V/m
- ◇ ESD withstand: 15KV