

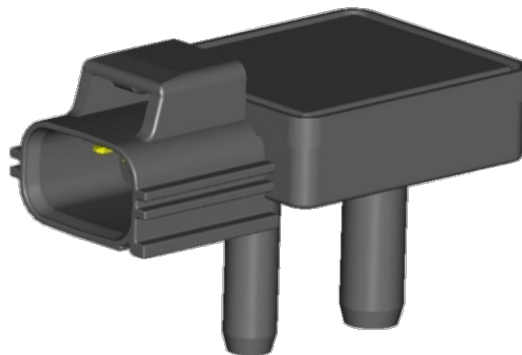
DIFFERENTIAL PRESSURE SENSOR

压差压力传感器

产品特点 | PRODUCT FEATURES

本产品用先进的微机电原理制作，核心技术为基于压阻效应的MEMS压力传感器芯片和高性能的信号调理AISC芯片，品质优良，封装精密，运用了成熟可靠的标定、补偿和保护技术，响应速度快、可靠性高、稳定性好，是一款高性价比的传感器产品，汽车尾气排放部分的捕集器系统中，测量捕集器前后通道的尾气压力差，供ECU选择合理的捕集器“再生”触发时刻，及额外燃料注入量，应用于EGR及空气滤清器系统测量压差。

This product is made with advanced micro-electromechanical principle. The core technology is MEMS pressure sensor chip based on piezoresistive effect and high-performance signal conditioning AISC chip. It has excellent quality and precision package. It uses mature and reliable calibration, compensation and protection technology to respond. Fast, reliable, and stable, it is a cost-effective sensor product. In the trap system of the vehicle exhaust part, the exhaust gas pressure difference of the front and rear channels of the trap is measured, and the ECU selects a reasonable trap "regeneration" trigger timing, and additional fuel injection amount for the EGR and air filter. System measurement differential pressure.



工作参数 | WORKING PARAMETERS

- ◇ 工作压力：0-18，35&100Kpa
(EGR系统20kPa、DPF系统100kPa) (可定制量程)
 - ◇ 精度：±1.5%F.S (线性，迟滞性，重复性)
 - ◇ 全误差带：±3%F.S. (-40°C-+125°C)
 - ◇ 运行温度：-40°C-+125°C
 - ◇ 存储温度：-40°C-+150°C
 - ◇ 保护压力：2倍以上工作压力
 - ◇ 爆破压力：3倍以上工作压力
 - ◇ 工作介质：空气
 - ◇ 使用寿命：500万次以上
 - ◇ 振动：10g (50Hz-2000Hz)
 - ◇ 防护等级：IP66
 - ◇ 供电电压：5V±0.25V
 - ◇ 输出电压：0.5-4.5V (范围可调)
 - ◇ 供电电流：<10mA
 - ◇ 响应时间：<10ms
 - ◇ 过压电压：40VDC
 - ◇ 反向电压：-40VDC
 - ◇ 短路保护：有
 - ◇ ESD标准：PIN针空气放电±8KV
外壳空气放电±16KV
 - ◇ EMC标准：ISO11452-5
(512MHz-1GHz) 50V/m
(1MHz-512MHz) 100V/m
- ◇ Working pressure: 0-18，35&100Kpa
(EGR system 20kPa, DPF system 100kPa) (customizable range)
 - ◇ Accuracy: ±1.5% F.S (linearity, hysteresis, repeatability)
 - ◇ Full error band: ±3% F.S. (-40°C-+125°C)
 - ◇ Operating temperature: -40°C-+125°C
 - ◇ Storage temperature: -40°C-+150°C
 - ◇ Protection pressure: over double working pressure
 - ◇ Burst pressure: over triple working pressure
 - ◇ Working medium: air
 - ◇ Service life: more than 5 million times
 - ◇ Vibration: 10g (50Hz-2000Hz)
 - ◇ Protection level: Ip66
 - ◇ Power supply voltage: 5V±0.25V
 - ◇ Output voltage: 0.5-4.5V (range adjustable)
 - ◇ Supply current: <10mA
 - ◇ Response time: <10ms
 - ◇ Overvoltage voltage: 40VDC
 - ◇ Reverse voltage: -40VDC
 - ◇ Short circuit protection: Yes
 - ◇ ESD standard: PIN needle air discharge ± 8KV
housing air discharge ±16KV
 - ◇ EMC standard: ISO11452-5
(512MHz-1GHz) 50V/m
(1MHz-512MHz) 100V/m